

For Immediate Release: December 21, 2018

Todd Merrill STUDIO

Brecht Wright Gander's Rubble Huddle

This past December at Design Miami, Todd Merrill Studio premiered a series of lighting from Brecht Wright Gander titled, *Yo! Burri*. The *Yo! Burri Light*, is an homage to Alberto Burri, the Italian painter and sculptor considered a key figure in Post-War abstract art. Like Burri, Gander employs unorthodox materials, in this case pigmented & reinforced paper mache, epoxy clay, steel, plaster wrap, and LEDs.

Three more pieces from that series are in the works to be exhibited this spring.

Rubble Huddle, Gander's latest work, is an extension of Gander's *Yo! Burri Series*. While the work relates to the overall material concepts behind *Yo, Burri!*, *Rubble Huddle* has an inviting playfulness - almost a ying to Burri's yang. Bulbous where the *Burri's* are spindly. Jubilant against *Burri's* malevolence.

The illuminated free standing sculpture made from reinforced paper mache, epoxy clay, steel, and plaster wrap, calls to mind celebrated designers Serge Roche and John Dickinson, both of whom frequently used monochromatic plaster to create iconic sculptural design.

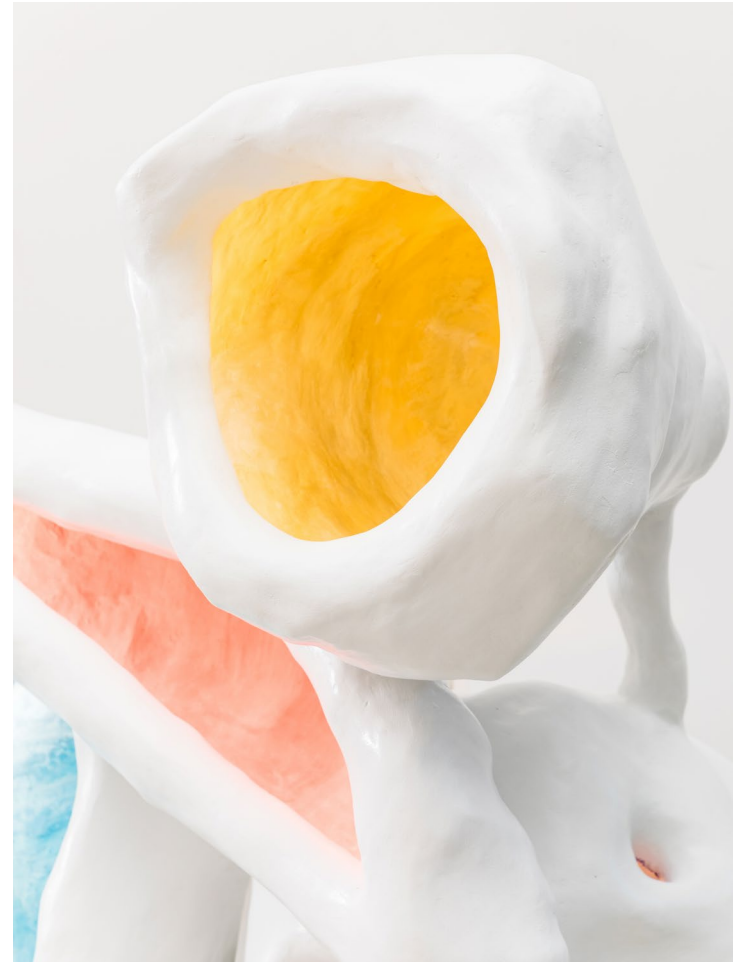
Gander's illuminated "cairn", with its large Flintstones forms painted and illuminated in joyful Lucky Charms hues, is as joyful as it is enigmatic.

Rubble Huddle is illuminated by hidden LED's which are both reflected and absorbed in the multi-colored metal leafed interiors creating an illusion that the interior glows from an almost mystical source.

Rubble Huddle will be exhibited this winter exclusively at Todd Merrill Studio.



Brecht Wright Gander, Rubble Huddle, NYC, 2018.



New York City artist, Brecht Wright Gander treats functionality as a ground for aesthetic play. His wide-ranging curiosity fuels his research-driven practice. With unyielding confidence Gander engages a multitude of unconventional materials in ways which cause them to spark, become molten, desiccate, oxidize, exhale and twist. He describes his unique works as “a culmination of many collisions.” Produced through experiment and experience, his sculptural works often hide their functionality on first appearance.

With a BA from Skidmore in foundational philosophy and years of experience working for firms focused on high-end design and build outs, Gander launched his own studio in 2017 to fully explore his intrepid approach to conception. Since then his truly unique, hand-made designs have succeeded in gaining attention, whether it be shock, awe, or admiration.

Dallas Dunn
Director, Todd Merrill Studio
info@ToddMerrillStudio.com
212.673.0531

Barbara L. Dixon
Press Inquiries, Todd Merrill Studio
barbara@barbaraldixon.com
212.933.1879 | 646.709.1536



Yo! Burri Light No.1
(shown with Junk Band Series No. 2